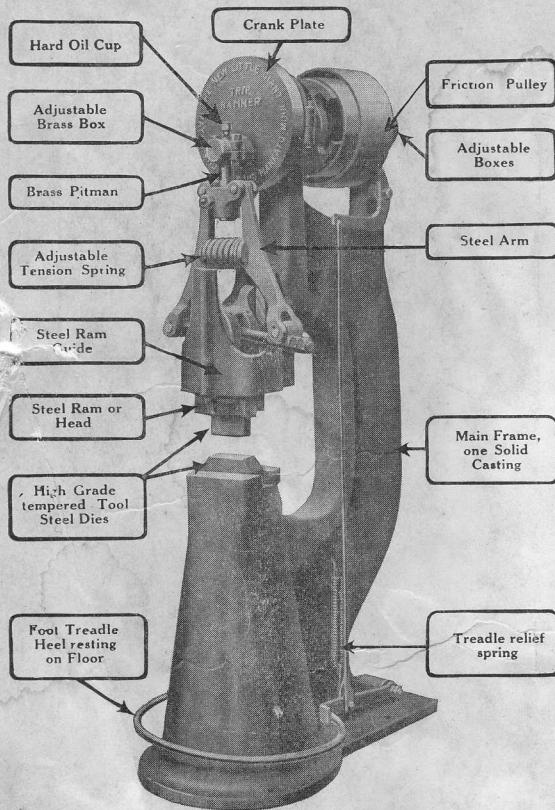


PROPOSED NEW HOME OF THE
LITTLE GIANT





THE LITTLE GIANT POWER HAMMER



Specifications.	25 lbs.	50 lbs.	100 lbs.
Will forge stock up to...	1½ sq. or 2 rd.	2 sq. or 2½ rd.	3 sq. or 4 rd.
Upper die size of face...	3"x1½"	3½"x1¾"	6"x3"
Lower die size of face...	3"x2"	3½"x2½"	6"x3"
Lower die length of base	5"	5½"	6"
Weight of steel ram....	25 lbs.	50 lbs.	100 lbs.
Weight of machine.....	800 lbs.	1600 lbs.	3200 lbs.
Height over all.....	5 ft. 4 in.	5 ft. 11 in.	6 ft. 6 in.
Floor space required....	16"x27"	20"x30"	28"x42"
Pulley size of.....	10"x3½"	12"x4"	14"x5"
Revolutions per minute...	400	325	250
Estimated H. P. required	¾	1½	2½
Size of individual motor recommended	1 H. P.	2 H. P.	3 H. P.

Little Giant Power Hammer users in following states

California	203	Missouri	225
Canada	294	Montana	165
Colorado	62	Nebraska	443
Iowa	410	North Dakota	624
Illinois	454	Oklahoma	178
Kansas	494	South Dakota	335
Minnesota	435	Texas	128

THE "HOUSE OF MAYER," the originators of the LITTLE GIANT line of DECIDEDLY DISTINGUISHED DRUDGERY DESTROYING DEVICES, was founded in Mankato, Minnesota, in January, 1876, more than thirty-nine years ago, by Lorenz Mayer, Sr., who has since retired from active life, the business having been incorporated as the MAYER BROTHERS COMPANY in recent years under the active management of Louis Mayer, president, and Lorenz L. Mayer, secretary-treasurer, sons of Lorenz Mayer, Sr., and trained from youth in the details of the business.

More than twenty-five years ago the "HOUSE OF MAYER" began the manufacture of the LITTLE GIANT LINE, the first member of which was the LITTLE GIANT POWER HAMMER.

The first LITTLE GIANT POWER HAMMER made, and every one since manufactured, numbering many thousands, are still in active daily service.

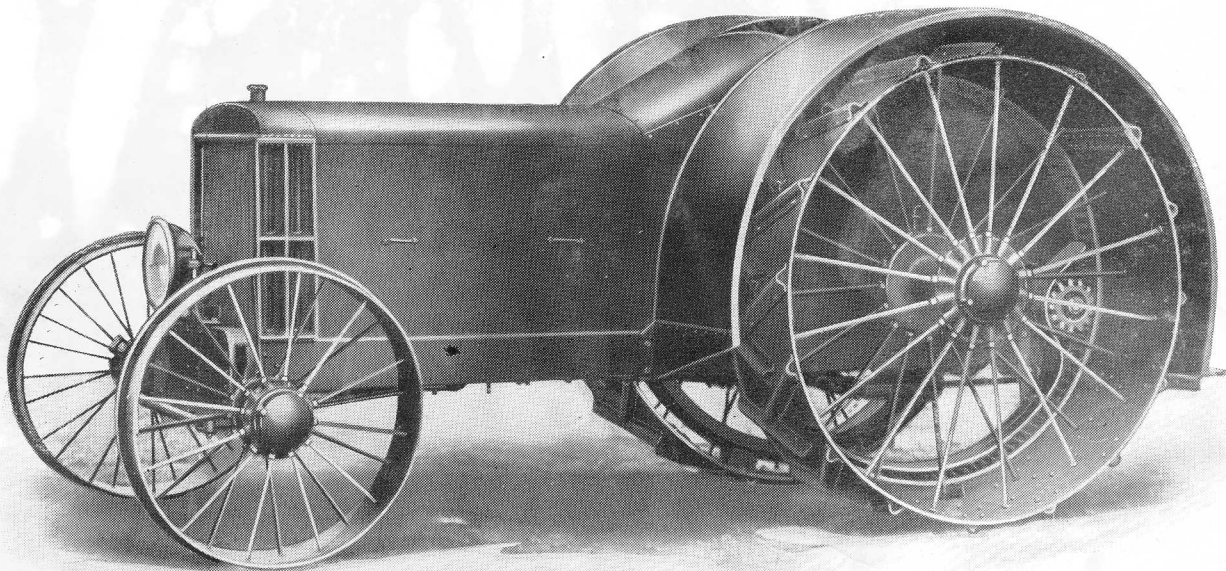
The 1914 upkeep expense, as shown by repair sales, on every LITTLE GIANT POWER HAMMER used from the first to the latest, all sizes included, was 48 cents each, or less than two-fifths of one per cent of the original cost to purchaser—an unbelievably remarkable record explainable only by those who use them, of which it is quite likely that your local blacksmith or machine shop is among the number.

The LITTLE GIANT POWER HAMMER is used all over the world, hundreds of the leading manufacturers of the United States and Canada owning one or more of them. The United States government, Standard Oil Company and International Harvester Company are among the number, the latter concern having purchased during the past four years, one or two at a time, fourteen.

Such records spell Q-U-A-L-I-T-Y, as only achieved by the "HOUSE OF MAYER."



THE LITTLE GIANT TRACTOR



SOME four years ago, having brought our LITTLE GIANT POWER HAMMER to such an unusual degree of efficiency that none of its users could think of anything to improve it, the eyes of our Engineering Department were directed toward other fields.

The Farm Gas Tractor problem had been wrestled with for many years by innumerable manufacturers with such unsatisfactory results that no one thought a successful one would ever be invented, yet a great cry was heard all over the farming world for a practical tractor, one of proper design, built of good material and by high class workmen and, above everything else, of strict durability.

Our instructions to our Engineering Department were:

"Spare no time or expense. If possible, build a Farm Tractor that in material, design, workmanship and practical durability will compare favorably with the highest priced automobiles made. Build to meet a required quality rather than a popular price. Do your experimenting at our company's expense, and not at that of the

purchaser. Do not offer one for sale until it is everything that the user will require of it."

For three long years our Engineering Department labored—designing, building, experimenting in the field and on the road, tearing down, re-designing and rebuilding many times—the task at many times seeming almost hopeless.

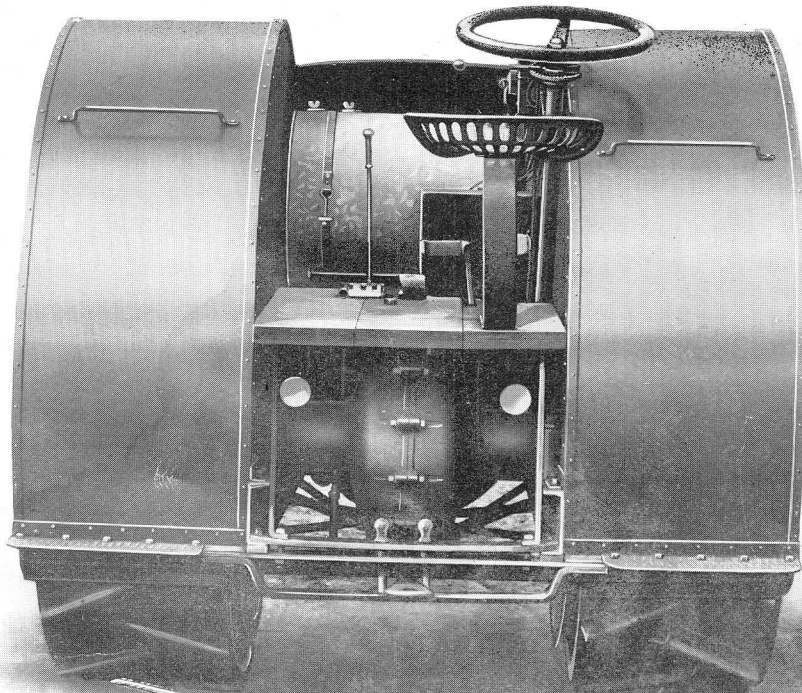
In June, 1914, our Engineering Department reported:

"Our work has been completed. In design, we have created a tractor that is good to look upon. In material, we have used high grade metals with a prodigality heretofore unknown in tractor manufacturing. In workmanship, we have called to our side labor most skilled. In practical durability, we have produced an article that will outlive and outwork the horse or the ox. Offer it to your customers with the utmost confidence in its merits."

Thus was born the LITTLE GIANT TRACTOR to the "HOUSE OF MAYER."

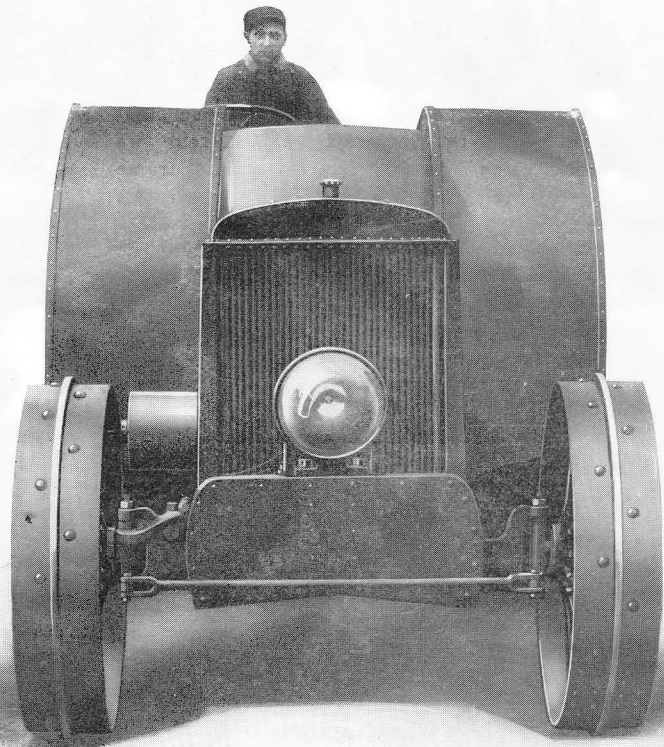


THE LITTLE GIANT TRACTOR



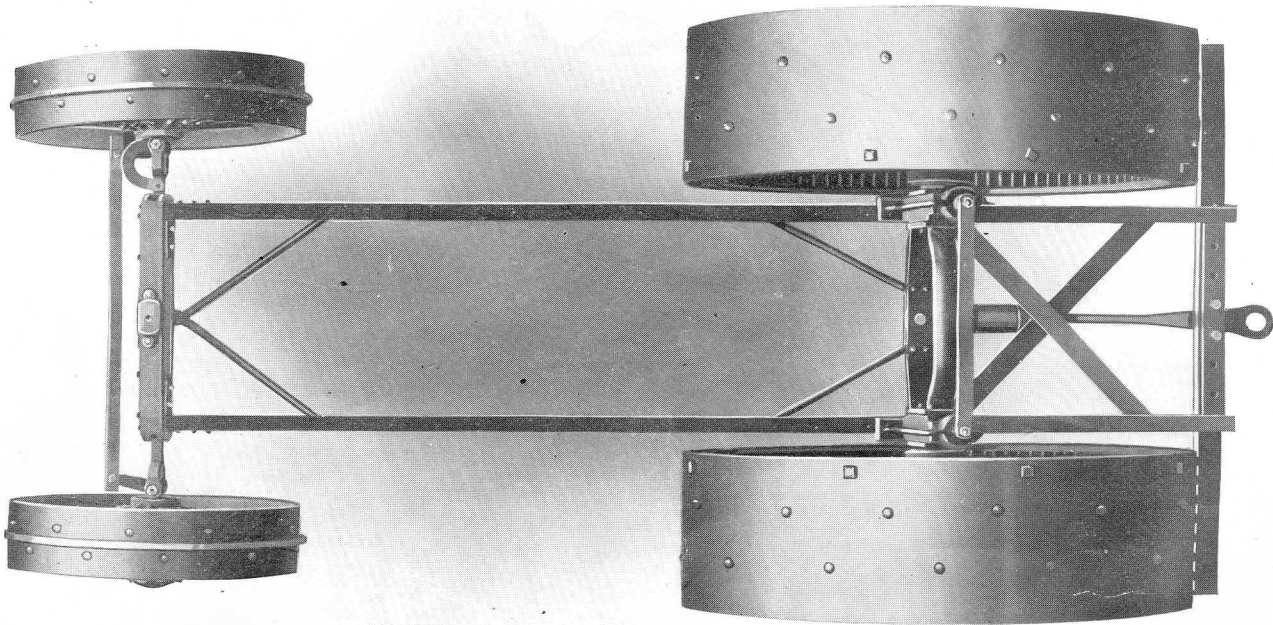
Note the massive draw-bar and differential gear construction, and the automobile type of foot clutch and brake levers, steering post with throttle and spark lever quadrants, and four speed "H" shifting lever.

Note carefully heavy front axle with automobile type of steering gear, extra large radiator of cellular type, the entire machine hooded and fendered in from weather, and the commanding view from the driver's seat. Also, the accessibility of belt pulley for power driven machinery purposes, and the accessory lighting equipment for night work.





THE LITTLE GIANT TRACTOR

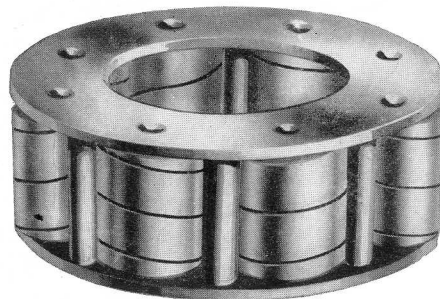


THE construction of our main frame is rigid, yet light, as may also be said of our rear drive and front steering wheels, because of the high grade material used.

The main frame is suspended on springs at one point on front axle and from rear axle on springs from two points, a genuine three point spring suspension frame that cannot be twisted or sprung no matter where the tractor is driven.

Our rear drive wheels travel idly on roller bearings, being driven by internal bull gear and spur pinion on rear full-floating drive axle on both sides.

The adjustable draw bar hitches to cross bar underneath the machine and in front of the rear drive wheel axles, thus eliminating usual side draft, and our draw bar pulls the load through a heavy spring in cast iron cylinder which effectually prevents strains or sudden shocks to tractor when starting with heavy load.



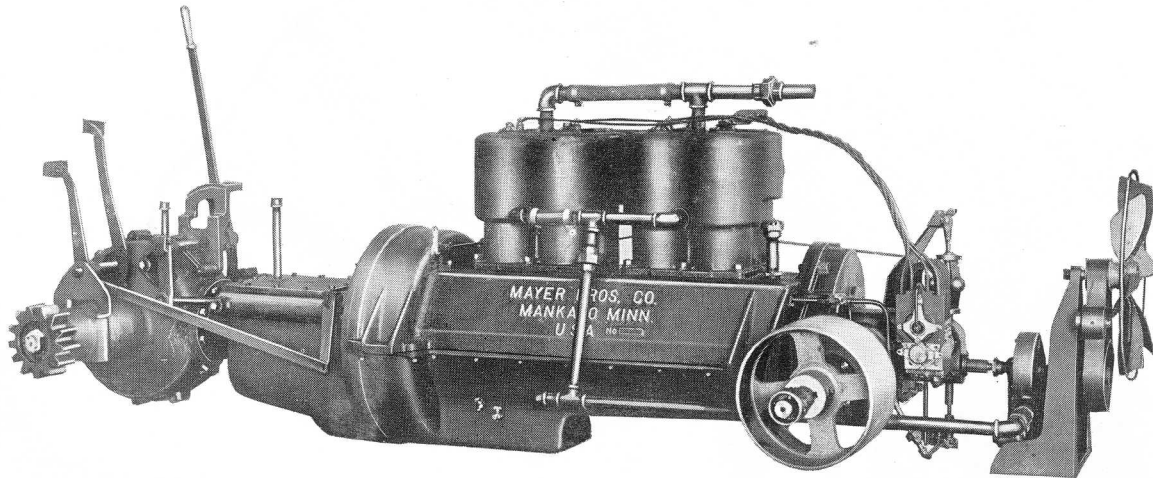
This is the famous Hyatt Slow Speed Spring Steel Hollow Roller Bearing. One filling of hard oil lasts an entire season. Made of high grade spring steel and, being hollow, they assist in smoothing the jolts out of the road. The spirals in spring rollers run in opposite directions

and keep the hard oil moving from side to side of the bearing.

There are eight of these bearings in the front and rear wheels of the LITTLE GIANT TRACTOR, two in each wheel.



THE LITTLE GIANT TRACTOR



Unit Power Plant consists of Motor, Clutch, Transmission, Differential and Full-Floating Rear Drive Axle

Coupled Short, Straight Drive. Running in Oil on Hyatt
Nickel Steel Cushion Spring Roller Bearings, With End
Thrust Ball Bearings Behind Every Bevel Gear.

Belt Pulley Drive is also a part of Unit Power Plant. Governor is gear driven and sensitively adjusted.

Water circulation pump is shaft driven. Heavy belt driven fan operates in rear funnel opening from radiator, insuring perfect cooling.

Oiling system consists of individual cylinder splash system, and in addition force feed pump system pumping oil direct to each crank shaft and connecting rod bearing. Motor is equipped with oil filter and every drop of lubricating oil is thoroughly cleansed from foreign particles before returning to crank case reservoir. Oil gauge on crank case also.

Upper crank case has hand hole plates, giving easy access to all bearings.

Valve stems, and all gearings, are dust proof encased.

The advantage of our Unit Power Plant is saving of a large portion of the power usually lost between the motor and the draw bar, about 74 per cent of our motor horsepower being delivered at the draw bar.

The advantage of protecting all of our gears and bearings from the heavy dust of plowing, harrowing or

other field work is too apparent to need any argument.

The axle of our rear drive wheels extends across and above our Unit Power Plant immediately behind the clutch housing. Applying the power to our drive wheels at their extreme inner rim, by the drive pinion shown in Unit Power Plant illustration to heavy crucible bull gear on drive wheels, driven from both sides, gives us the greatest leverage possible to obtain. Further, applying this power at the extreme rear of our drive wheels gives us an over-and-down leverage, making it possible for us to obtain a pulling power heretofore considered impossible by the most reputable mechanical engineers on a light weight tractor.

All of our transmission and differential gears and shafting are of high grade steel, cut from the raw material and tempered in our own factory.

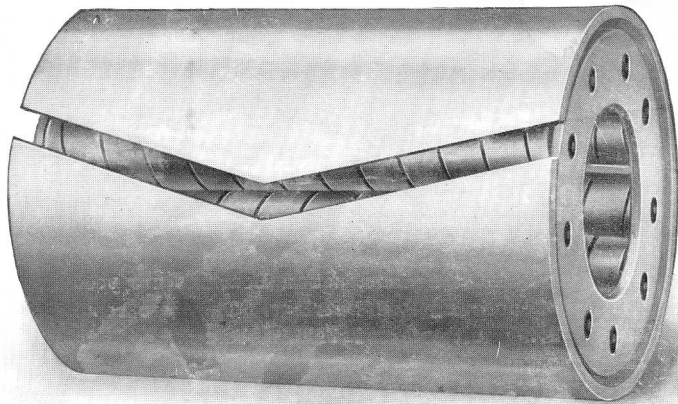
Our clutch is of the old reliable cone type.

Valves extra large, constantly lubricated from crank case.

Cast iron crank case. Lower half removable without disturbing crank shaft or bearings.

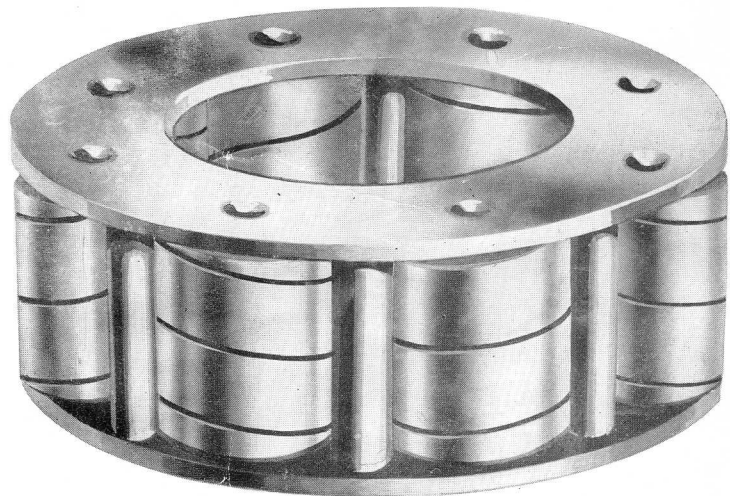


THE LITTLE GIANT TRACTOR

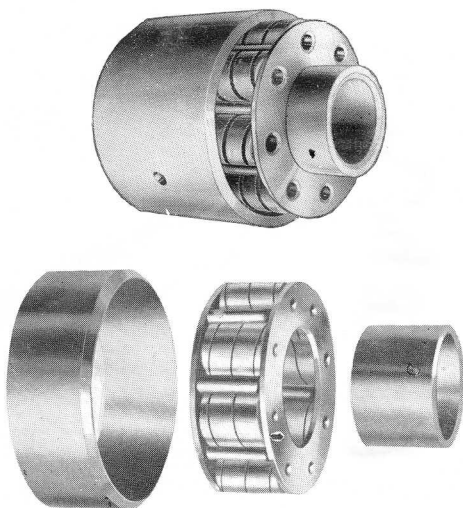


There are eight of these Hyatt Nickel Steel Cushion Spring Roller Bearings in the LITTLE GIANT TRACTOR, two in each front wheel and two in each rear drive wheel. Once filled with grease, they will run one season, and they are dust tight. These are Slow Speed Type Bearings.

This is the High-Speed Type of Hyatt Nickel Steel Cushion Spring Roller Bearings with which all of our gearing and shafting is fully equipped.



These are High Speed Types of above bearings, showing inner and outer sleeves for protection of shafting and rollers from the extremely high speed at which they are operated.



We spend more money for Hyatt Bearings alone in each of our LITTLE GIANT TRACTORS than many of our competitors do for their entire motor and power plant. The LITTLE GIANT TRACTOR is completely equipped with Hyatt Bearings, and not merely with two or three set so that we can advertise our product as "Equipped With Hyatt Roller Bearings."

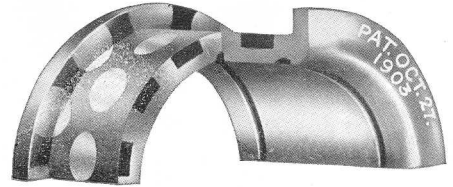


THE LITTLE GIANT TRACTOR



Reinforced and interlocked throughout body and flanges—skeleton and babbit one homogeneous mass.

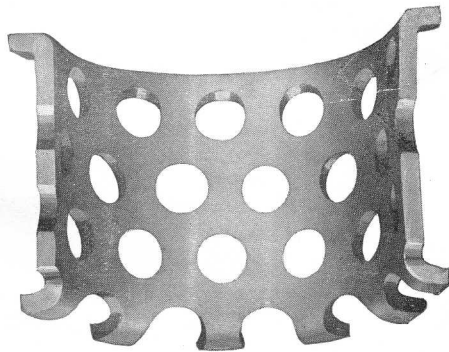
Glyco Bearings for Crank Shafts and Connecting Rods



Section showing reinforcement.

The Glyco Patented Skeleton Construction Bearings are used in all of our Crank Shaft and Connecting Rod Bearings. They are removable and quickly replaceable, being a reinforced babbitt bearing embodying enormous strength and resistance.

The steel skeleton embedded in the babbitt changes weakness to strength—just what steel reinforcement does to concrete.



Steel skeleton, used in combination with babbitt metal of high grade.

LITTLE GIANT TRACTOR SPECIFICATIONS

		Model A.	B.
Horse Power	Belt	35	22
	Draw Bar	28	16
Speeds	Low	1½	1½
	Intermediate	3	3
	High	6	6
	Reverse	1½	1½
Motor Speed	Rev. per Min.	750	900
Cylinders, "L" Head, cast in pairs	Bore	5¼ in.	4¼ in.
	Stroke	6 in.	5 in.
Crank Shaft	Diameter	2½ in.	2 in.
Drive Wheels	Diameter	66 in.	54 in.
	Face	20 in.	14 in.
Wheel base		102 in.	87 in.
Extension Rims	Extra Equipment	10 in.	6 in.
Width of Tread		75 in.	52 in.
Fuel Tank	Main	35 gals.	30 gals.
	Reserve	5 gals.	5 gals.
Cooling	Water	10 gals.	8 gals.
Weight	All Tanks Full	8,700 lbs.	5,200 lbs.
Draw Bar Pull		4,500 lbs.	2,200 lbs.

Price

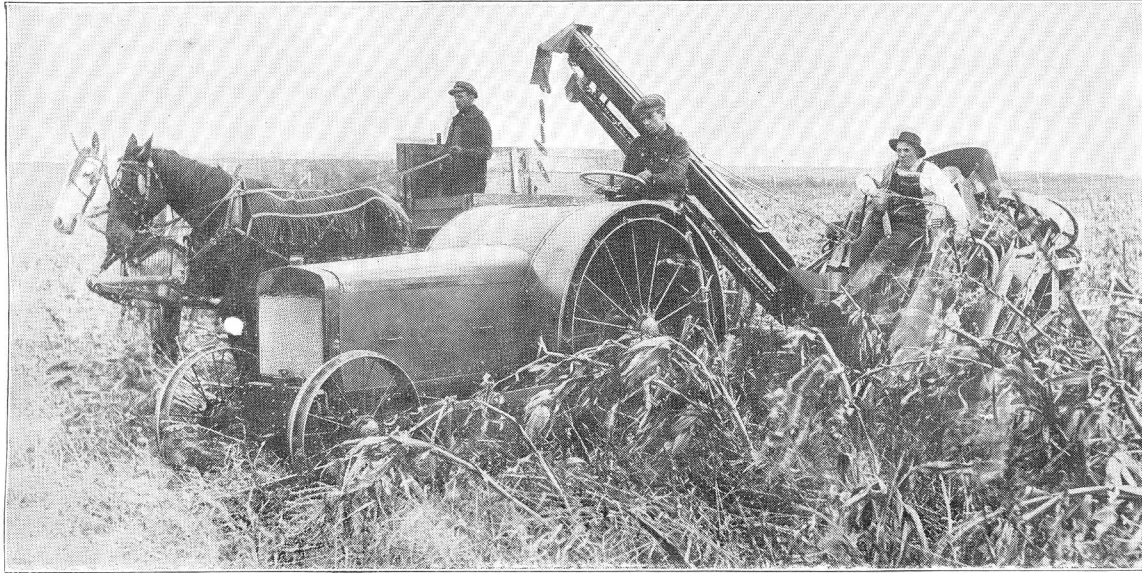
Little Giant Tractor

Model "A"	\$2,200.00
Extension Rims	75.00
Model "B"	\$1,250.00
Extension Rims	50.00

F. O. B. Factory.



THE LITTLE GIANT TRACTOR



Model "B" LITTLE GIANT TRACTOR and well known make of corn picker on large corn and stock farm near Lake Crystal, Minn., picking from ten to twelve acres of corn per day of ten hours, with our own divider and raising device on left side of tractor for handling down corn so picker jaws can get it.

For the fall of 1915 we will have truck to hitch wagon and picker to, the tractor pulling both, thus saving one man and a team, besides insuring same movement of wagon as picker and avoiding waste of corn.



Model "B" LITTLE GIANT TRACTOR and LaCrosse Four Bottom 14-inch Automatic Gang, a one man outfit, operating on large corn and stock farm near Mankato in

November, 1914, plowing one and one-half acres per hour, seven inches deep, in corn stalk field and covering up everything.



THE LITTLE GIANT TRACTOR



MODEL "B" LITTLE GIANT TRACTOR, with home made outfit of two large spring tooth harrows hooked to truck made of two old drill wheels and iron axle, on famous Lone Pine Holstein Stock Farm near Owatonna, Minnesota. This tractor ran from ten to fourteen hours per day forty-two out of the first forty-nine days after the owner bought it.

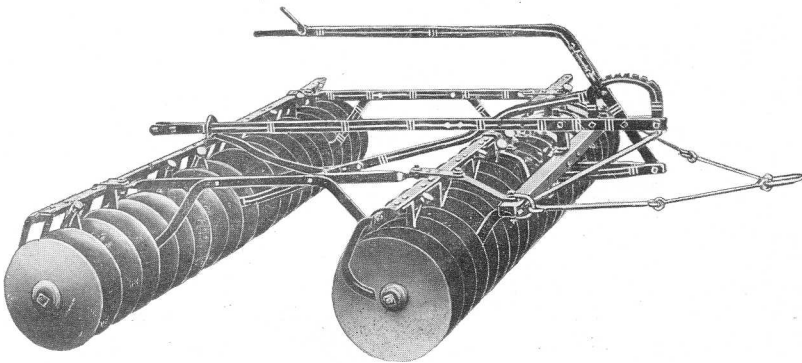
It averaged during the week it was used for spring tooth harrowing two and one-half rounds to one of a five horse team working adjoining pulling one spring tooth harrow, or half of the tractor's load. It traveled faster

than possible with the team and it did not have to stop to rest.

This field was in a high state of cultivation and the ground very soft, yet, without extra extension rims, the tractor did not sink in or pack the ground.

The owner has since used this tractor and spring tooth harrow outfit very effectually in killing a bad stand of quack grass.

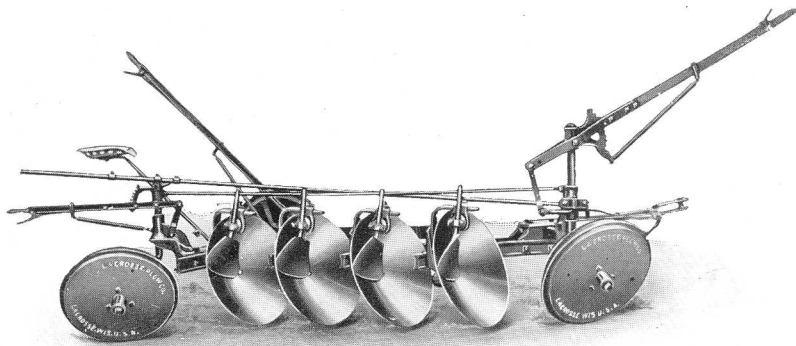
For killing in one season quack grass, thistles or other troublesome grass or weeds, this tractor-spring tooth harrow outfit has no equal.



The La Crosse Double Disc Harrow, used with Model "B" LITTLE GIANT TRACTOR, is the proper method on grain fields after cutting, starting growth at once and conserving moisture.

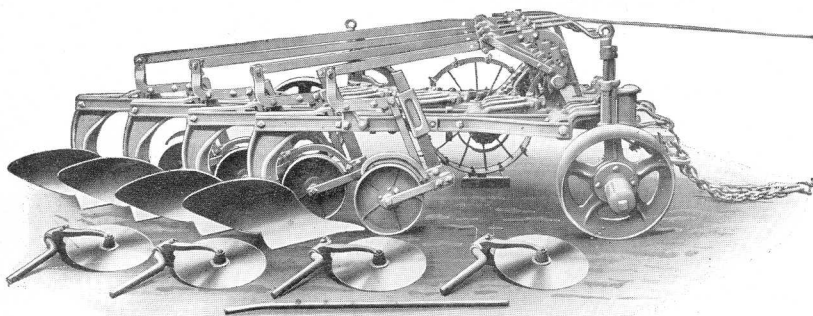
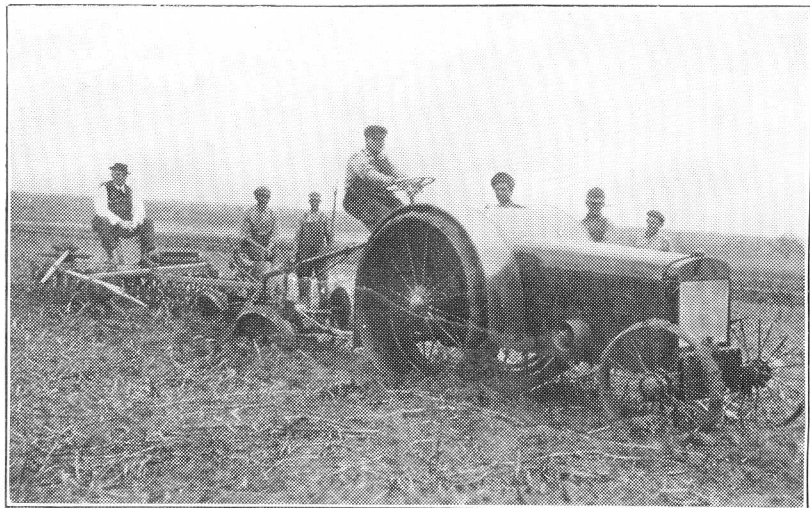


THE LITTLE GIANT TRACTOR



The La Crosse Five Disc Plow, with Model "B," or the Eight Disc Plow, with Model "A" LITTLE GIANT TRACTOR, is the proper outfit for subduing that sticky, yet fertile soil, that mold board plows will not successfully handle.

Model "B" LITTLE GIANT TRACTOR and La Crosse Five Disc Gang, breaking virgin soil, full of mesquite roots, in Southern Texas, at the rate of one acre per hour. This soil was a heavy gumbo where no mold board plow would ever work.



La Crosse Four Bottom, 14-inch, automatic independent beam gang plow, suitable for the Model "B" LITTLE GIANT TRACTOR. In very heavy sod breaking one bottom should be raised and kept out of use.

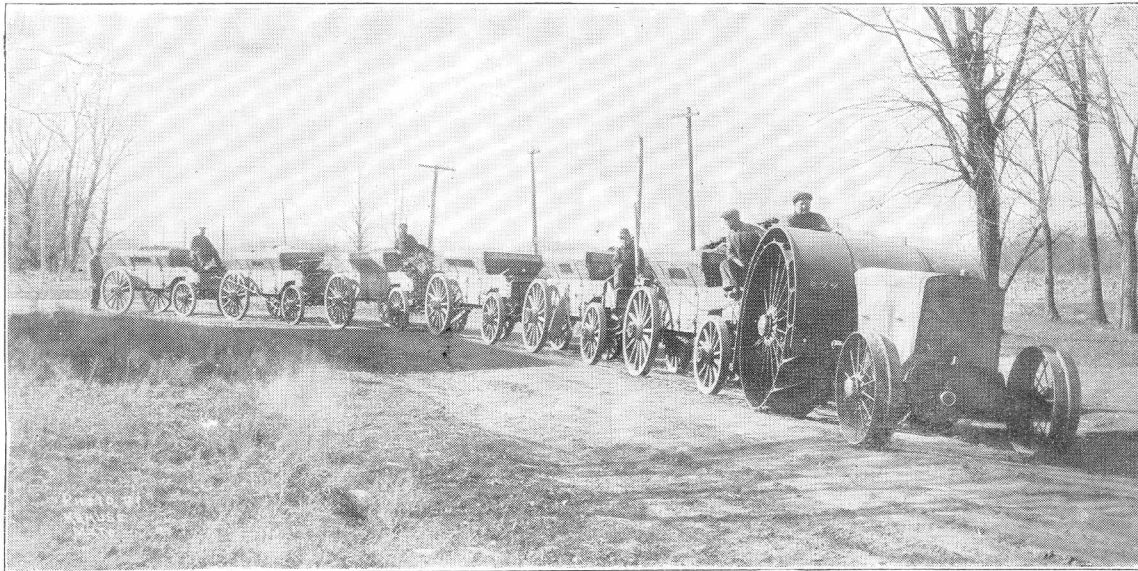
The above plow is also built in the automatic rigid beam type suitable for the Model "B" LITTLE GIANT TRACTOR.

It is also built in six bottom, 14-inch, automatic independent beam gang for the Model "A" LITTLE GIANT TRACTOR.

Prices on all types gang plows, disc plows and disc harrows will be given on request, as we have jobbing contract on same from the manufacturer, the LaCrosse Plow Co., LaCrosse, Wis.



THE LITTLE GIANT TRACTOR

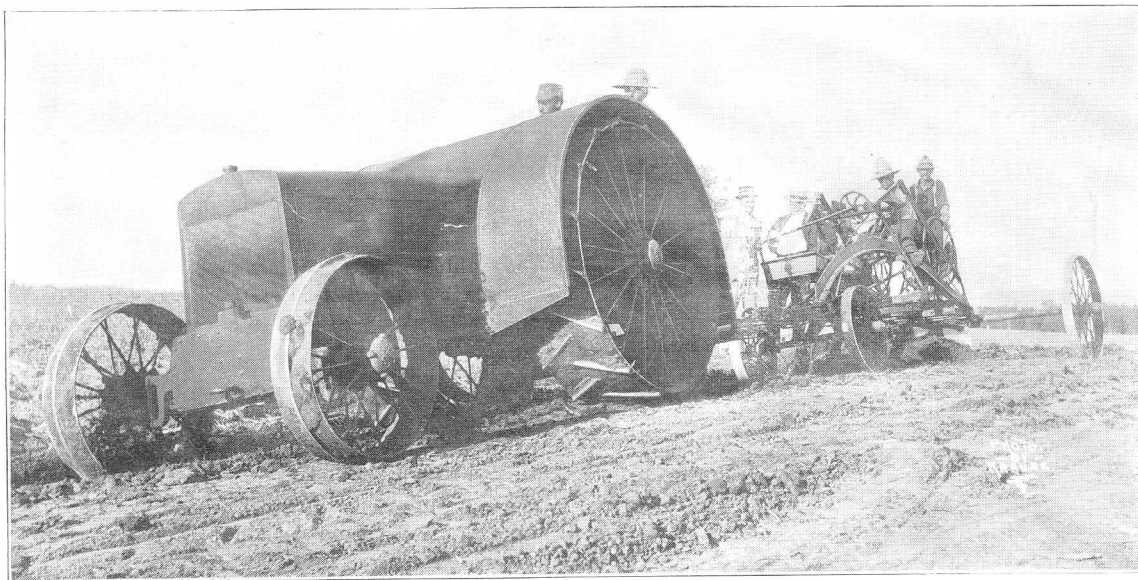


Model "A" LITTLE GIANT TRACTOR with 30 ton load crushed rock on contract work for Widell & Co., Mankato, Minn.

Haul, 22 miles; time, round trip, 6½ hours; gas

used, 25 gal.; oil, 1½ gal.; roads rocky and rough, with four long hills with 8 per cent to 14 per cent grade.

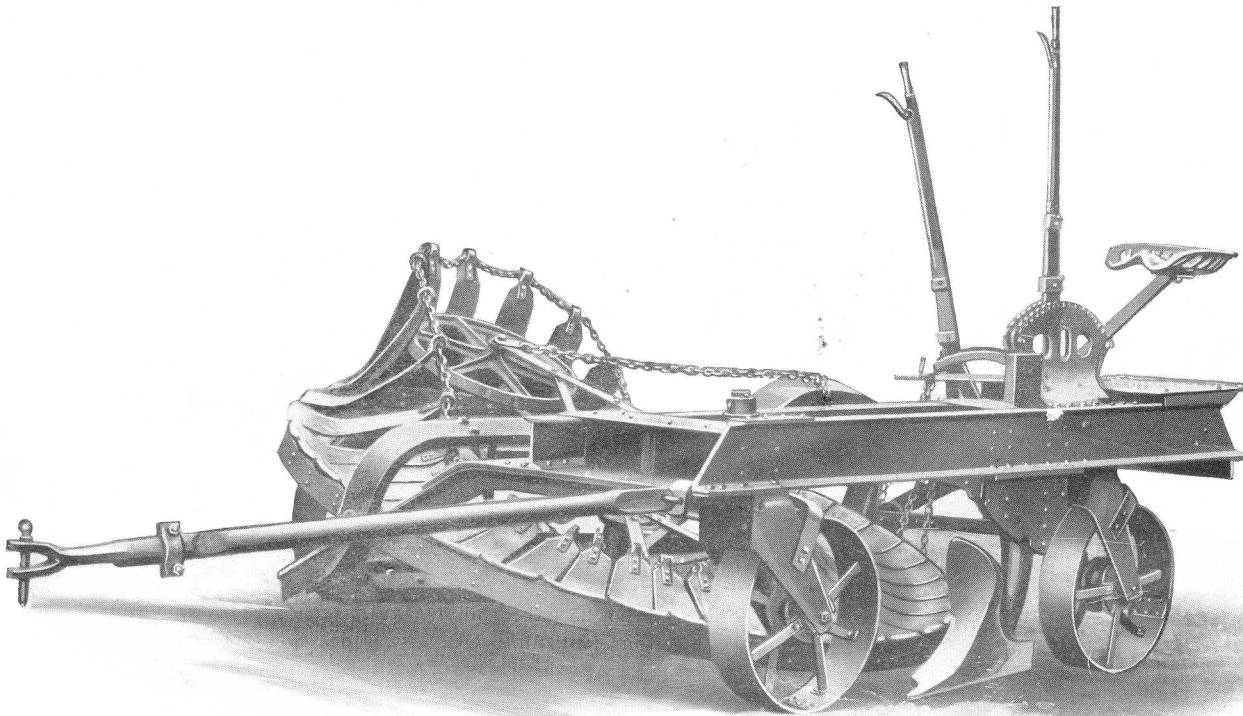
A money saving outfit for any contractor or municipality.



Model "A" LITTLE GIANT TRACTOR and well known make of heavy elevator grader building public roads in LeSueur County, Minn., averaging one mile completed road in each day of ten hours, with 30 gallons of gasoline and 2 gallons of oil. Two men required to operate the outfit.



THE LITTLE GIANT ROTARY ROAD GRADER



THE LITTLE GIANT ROTARY ROAD GRADER is the sensation of the road building world. It is built to supply an unfilled want between the large elevator grader and the ordinary blade grader.

For any road up to 30 feet in width and crowned not more than six feet high in center, it will do more than 50 per cent more work than any elevator grader and many times as much as a ten foot blade grader.

It has no belts to tear or wear, no gears to cut, nothing to bother.

The elevating wheel furnishes its own elevating power by friction on ground next to plow.

The dump wheel is adjustable whereby throw can be ranged from five to more than ten feet. When dumped the dirt is scattered and lumps are broken up. When the grade is completed the road is ready for automobile travel.

The plow has sixteen inch share and is of heavy railroad plow type, attached to heavy frame supported by two wheel trucks.

The LITTLE GIANT ROTARY ROAD GRADER will move from 200 to 300 yards of dirt per hour. It is built

of steel and therefore is of light weight. There is not one piece of wood in its construction.

The plow and elevator wheel adjusting levers are in easy reach of the driver and, having long leverage, handle easily.

In making a new road through heavy sod, the elevating device breaks up and scatters the sod so it is easily covered with the next cuttings of dirt.

Stones, roots or anything else that your plow will tear up are elevated without danger to elevating wheel, which is not only strong but has ample room on elevator.

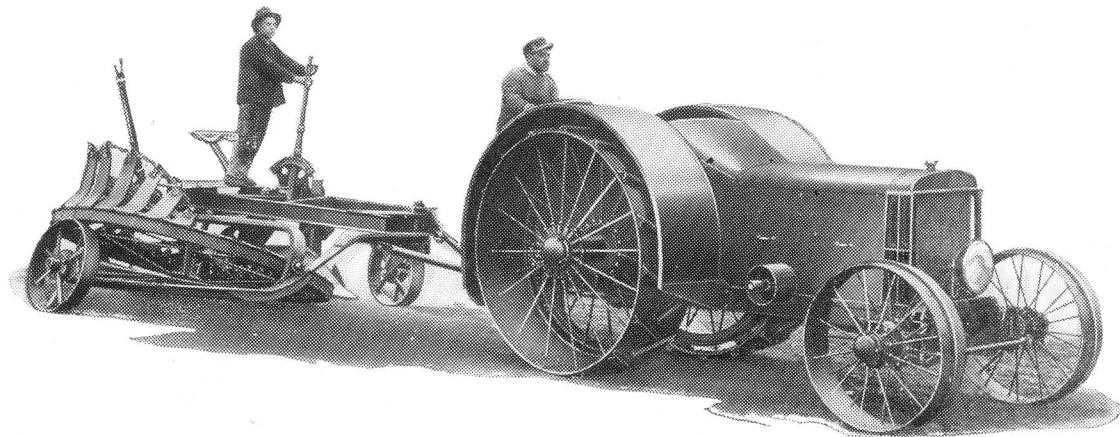
It is guaranteed for one year against defects in material or workmanship, and if not satisfactory, may be returned at our expense after ten days' use.

Twelve to sixteen horses will operate it successfully. So will any good tractor of not less than 25 H. P. on draw bar. However, it will give the greatest satisfaction when used with the Model "A" LITTLE GIANT TRACTOR.

4,800 pounds is the weight of the LITTLE GIANT ROTARY ROAD GRADER and its price is \$400, f. o. b. Mankato, Minn.



The Little Giant Rotary Road Grader and Tractor



MODEL "A" LITTLE GIANT TRACTOR and LITTLE GIANT ROTARY ROAD GRADER, the most useful outfit known for building of graded roads.

Every township, city, municipality and county should own one or more of these outfits which will build their roads quickly and thoroughly. A few dump wagons used in connection with their Model "A" LITTLE GIANT TRACTOR will gravel every foot of their roads within a year or two.

The good road movement is here to stay. Get yours early and enjoy it while you live.

The Model "A" LITTLE GIANT TRACTOR will also handle successfully your elevator grader, or your 12-foot heavy blade grader.

The Model "B" LITTLE GIANT TRACTOR is the right power for your 8-foot blade grader, but has hardly enough power for satisfactory and rapid work with the LITTLE GIANT ROTARY ROAD GRADER.



ONE city block, 300 feet of raw street, completed in 42 minutes by Model "A" LITTLE GIANT TRACTOR and LITTLE GIANT ROTARY ROAD GRADER, in Mankato, Minn.



MAYER BROTHERS COMPANY



POST OFFICE

STATE

MY NAME

DATE

191

Mayer Brothers Company, Mankato, Minn., U. S. A.

Gentlemen.

For the purpose of being placed upon your mailing list for special articles and circulars on tractor farming, and for other farming and stock raising literature which you may issue from time to time during the next twelve months, for which there is to be no charge and on which you are to prepay postage, I give you the following information concerning my farming and stock raising operations, viz:

Acres owned..... Under cultivation.....acres. Nature of top soil is.....

.....(describe carefully.) If you have any stony land, state how much and what kind of stone.....

Depth of top soil is.....inches. Kind of sub-soil..... Live stock owned: Horses....., Mares....., Mules.....; Cows....., breed.....; Hogs....., Sheep.....

CROPS PAST SEASON:acres wheat, yield.....bu;acres corn, yield.....bu;acres oats, yield.....bu;acres barley, yield.....bu;acres rye, yield.....bu;acres of.....hay, yield.....tons; other crops and their yield.....

If you have ever owned tractor, state name.....horse power....., when purchased....., work done with it.....

Was it satisfactory?..... Do you still own it?..... If you have never owned a tractor, are you familiar with operation and adjustment of gasoline engines, carburetors, magnetos, etc.?

When do you expect to be in the market for a tractor?..... What work do you want to do with it?

Which model of the LITTLE GIANT TRACTOR suits your purpose best?.....

On what terms would you wish to purchase?.....



MAYER BROTHERS COMPANY

Send descriptive printed matter of the LITTLE GIANT LINE to the following:

Table with 4 columns: NAME, ADDRESS, ACRES FARMED, ARTICLE NEEDED. The table contains multiple rows of horizontal lines for data entry.



MAYER BROTHERS COMPANY



The Owners of the
MAYER BROTHERS COMPANY
Manufacturers of
LITTLE GIANT LINE

are the people who have money invested in the company, the following well known people and firms being among the number, viz:

- HON. J. W. ANDREWS,
Physician and Surgeon,
Minnesota State Senator,
Director, First National Bank,
Director, Mankato Loan and Trust Co.
- BEN BANGERTER, JR.,
Director, First National Bank,
Director, Mankato Loan & Trust Co.
- ALBERT G. BIERBAUER,
President, Bierbauer Brewing Co.,
Director, Mankato State Bank.
- ROBERT E. BROWN,
Manager, Consumers Power Co.
- GEO. E. BRETT,
President, Geo. E. Brett, Inc.
President, Mankato Savings Bank,
Director First National Bank,
Director, Mankato Loan & Trust Co.
- J. R. BRANDRUP,
Proprietor, Mankato Business College,
Director, Citizens' Telephone Co.
- C. R. BUTLER,
Treasurer, Free Press Publishing Co.,
Secretary, Boyle Land Co.
- H. F. BLOOMQUIST,
City Engineer of Mankato.
- PAUL R. CORDS,
State Bank of Eagle Lake.
- F. E. CRANDALL,
Secretary-Manager, Hubbard & Palmer Co.
- F. M. CURRIER,
Rosenberger & Currier,
Director, First National Bank,
Director, Mankato Loan & Trust Co.
- GUS. W. EICHSTAEDT,
Proprietor, Mankato Electric Co.,
First National Bank.
- WM. G. FENGER,
Cashier, C. & N. W. Ry. Co.
- M. D. FRITZ,
Vice President, Mankato State Bank,
Secretary, Free Press Publishing Co.,
Director, Citizens' Telephone Co.
- JOHN H. HOHMANN,
President, National Bank of Commerce.
- LORENZ HENLINE,
President, German-American Bank.
- FRANK W. HUNT,
President, Free Press Publishing Co.,
Vice President, Boyle Land Co.
- LOUIS JANDA,
Director, National Bank of Commerce.
- A. G. JOHNSON,
Treasurer, Blue Earth County.
- FRANK KRUSE,
Director, St. Clair State Bank.
- FRED KRON,
President, Mankato State Bank,
Proprietor, Kron Departmental Store.
- GEORGE J. KLEIN,
President, John Klein Co.
- KRUSE BROTHERS, Merchants.
- OTTO L. KAMMERER, Merchant.
- E. L. LAMM, Druggist.
- OTTO E. LAMM, Capitalist.
- LAMM INVESTMENT CO.
- HENRY F. LEONARD,
Real Estate, Loans, Insurance.
- JOHN NYQUIST,
Proprietor, Nyquist Clothing Co.
Director, First National Bank,
Director, Mankato Loan & Trust Co.
- J. B. NELSEN,
Proprietor, J. B. Nelsen Construction Co.,
Director, National Bank of Commerce,
Vice President, Bankers & Merchants Ins. Co., Mpls.
- A. F. PFAU, JR., Attorney at Law.
- H. A. PATTERSON,
President, Citizens' Telephone Co.,
Secretary, L. Patterson Merc. Co.,
Director, National Citizens Bank.
- GEO. M. PALMER,
President, First National Bank,
President, Hubbard Milling Co.,
President, Hubbard & Palmer Co.,
President, Mankato Loan & Trust Co.
- NIC PETERSON,
President, Nic Peterson Co.,
Vice President, Citizens Telephone Co.
- A. G. ROEMER,
Manager, Lampert Lumber Co.
- E. ROSENBERGER,
Rosenberger & Currier.
- GEO. F. SCHRIEBER,
Chief Engineer, Hubbard Milling Co.
- A. M. STEIN, Merchant.
- A. H. SILBER, Merchant.
- JOHN TRENHAUSER,
Director, German-American Bank.
- CHAS. T. TAYLOR,
Fuel and Machinery.
- I. N. TOMPKINS,
Vice President, Free Press Publishing Co.
- A. J. VEIGEL,
Cashier, National Bank of Commerce.
- W. D. WILLARD,
Cashier, First National Bank,
Treasurer, Mankato Loan & Trust Co.,
Secretary-Treasurer, Citizens Telephone Co.
- JOHN C. WISE, Jr.,
Editor, Review Publishing Co.
- C. E. WISE,
Director, National Citizens Bank,
Manager, Review Publishing Co.



The
Mayer Brothers Company

Mankato, Minnesota, U. S. A.



Officers

LOUIS MAYER, President

JOHN NYQUIST, Vice-President

LORENZ L. MAYER, Secretary-Treasurer



Directors

GEO. M. PALMER

President, First National Bank,
President, Mankato Loan & Trust Co.,
President, Hubbard Milling Co.,
President, Hubbard & Palmer Co.

E. A. BYE

Superintendent and Designing Mechanical Engineer,
Mayer Brothers Co.

LOUIS MAYER

President, Mayer Brothers Co.

JOHN NYQUIST

Proprietor, Nyquist Clothing Co.,
Director, First National Bank,
Director, Mankato Loan & Trust Co.

W. D. WILLARD

Cashier, First National Bank,
Treasurer, Mankato Loan & Trust Co.,
Secretary-Treasurer, Citizens Telephone Co.

LORENZ L. MAYER

Secretary-Treasurer, Mayer Brothers Co.



Our Guarantee

ALL LITTLE GIANT goods are guaranteed to give satisfaction when used properly. If they do not, we would rather have our goods back than keep your money. They are warranted against defective material and workmanship for one year from date of sale.

Our manufacturing record for the past thirty-nine years has been one of service to our customers in connection with the very best product that proper design, high grade material and first class workmanship could produce.

We have adhered closely to careful, conservative methods and have never chased off after new-fangled or impractical ideas.

During this time, we have necessarily spent many

thousands of dollars in experimenting, building, tearing down and re-building, again and again, in order to reach our present state of perfection, but this has been done at our own expense and not at the expense or time of the purchasers of LITTLE GIANT products, and, in this respect, we differ greatly from many of our competitors.

These facts, in connection with the high business standing and integrity of our officers and directors, whose names are given on this page, and the standing of other interests back of our company, whose names are given on the preceding page, ought to constitute a guarantee of straightforward and fair dealing, and an assurance of the best line of goods that brains and money can produce, such as to invite the confidence of any prospective purchaser of any article in the LITTLE GIANT LINE



The
Mayer Brothers Company

Mankato, Minnesota, U. S. A.

